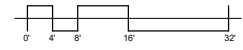


KEYNOTES:

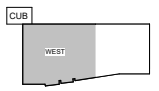
1. THESE KEYNOTES INDICATE ROOMS/INTERIORS AS CALLED OUT ON SCHEDULE SHEET ME-10.

2. INTERIORS UNIDENTIFIED HEREIN SHALL BE IDENTIFIED BY THE SCHEDULE SHEET ME-10.



FLOOR PLAN LEGEND

	1-HOUR FIRE BARRIER
	3-HOUR FIRE BARRIER
	4-HOUR FIRE BARRIER
	INDICATES SMOKE PARTITION
	INDICATES CAST CONCRETE
	INDICATES CONCRETE MASONRY UNITS
	INDICATES BRICK MASONRY
	INDICATES STEEL STUD FRAMED PARTITIONS



1 M1101A
 FIRST FLOOR MECHANICAL PLAN - HVAC - SECTOR A
 5/8" = 1'-0"

O'BRIEN ATKINS
 ENGINEERING ARCHITECTURE PLANNING
 2100 W. HARRIS BLVD., SUITE 100
 RALEIGH, NC 27602
 WWW.OBENGINEERING.COM

DAVID MOTLEY
 PROFESSIONAL ENGINEER
 LICENSE NO. 35082
 MECHANICAL
 STATE OF NORTH CAROLINA

DAVID MOTLEY
 PROFESSIONAL ENGINEER
 LICENSE NO. 35082
 MECHANICAL
 STATE OF NORTH CAROLINA

REV#	DESCRIPTION	DATE
1	ADDENDUM 1	6/19/21
2	REVISION	8/27/21
3	REVISION	11/22/21
4	REVISION	12/1/21
5	REVISION	1/20/22
6	REVISION	2/24/22
7	REVISION	3/24/22
8	REVISION	5/26/22
9	REVISION	6/29/22
10	REVISION	10/18/22
11	REVISION	11/18/22
12	REVISION	12/15/22
13	REVISION	1/18/23
14	REVISION	3/14/23
15	REVISION	5/15/23

REVISION SCHEDULE

WAKE COUNTY PUBLIC HEALTH BUILDING IFC PACKAGE
 2000 W. HARRIS BLVD., SUITE 100
 RALEIGH, NC 27602
 2020

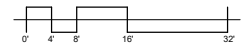
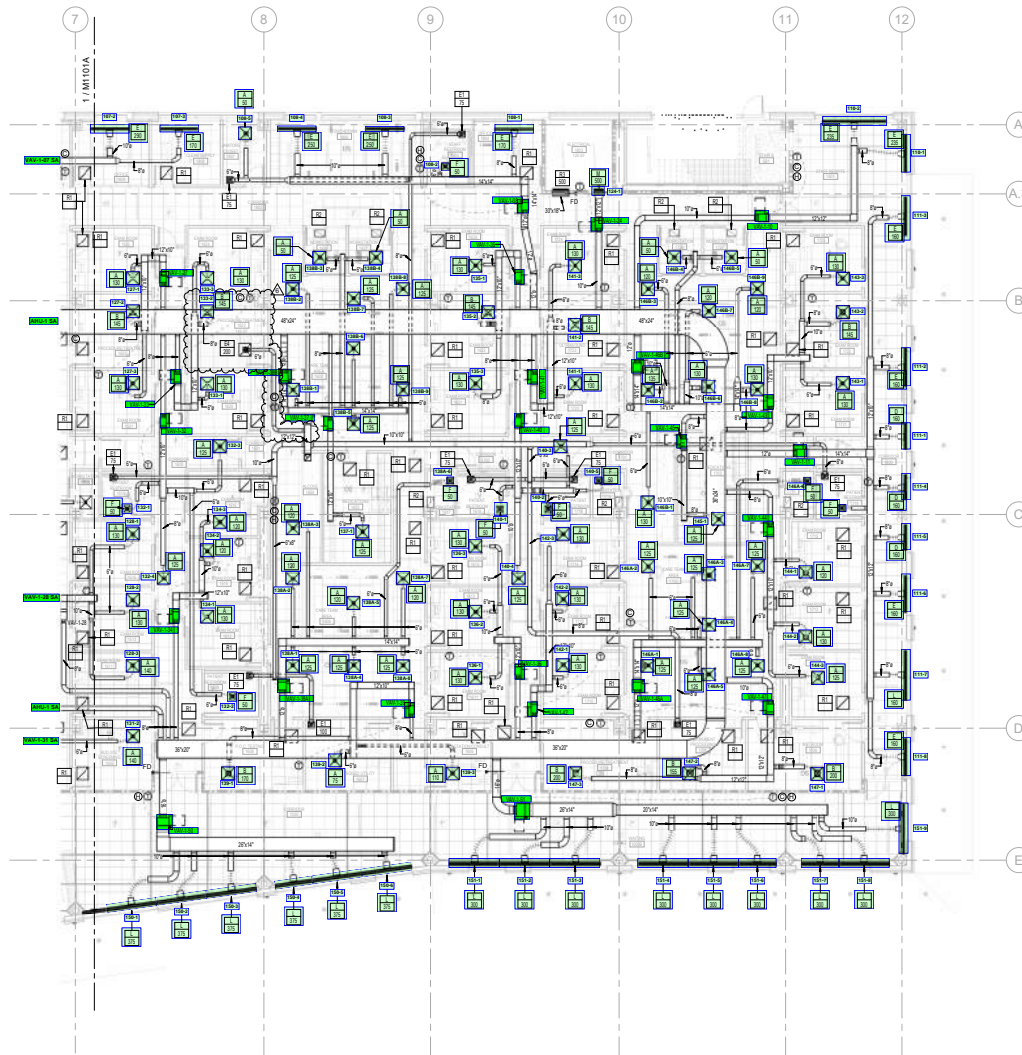
IFC PACKAGE	ISSUED SETS
IFC PACKAGE	6/29/2023

Drawn By: JEM

Project No: 2020051

M1101A
 FIRST FLOOR MECHANICAL PLAN - HVAC - SECTOR A

1
M1101B
FIRST FLOOR MECHANICAL PLAN - HVAC - SECTOR B
1/8" = 1'-0"



FLOOR PLAN LEGEND

- 1-HOUR FIRE BARRIER
- 2-HOUR FIRE BARRIER
- 3-HOUR FIRE BARRIER
- INDICATES SMOKE PARTITION
- INDICATES CAST CONCRETE
- INDICATES CONCRETE MASONRY UNITS
- INDICATES BRICK MASONRY
- INDICATES STEEL STUD FRAMED PARTITIONS

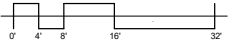


REVISION SCHEDULE

REV #	DESCRIPTION	DATE
1	SCHEMATIC 1	01/19/21
2	REVISION	02/17/21
3	REVISION	03/10/21
4	REVISION	03/24/21
5	REVISION	03/24/21
6	REVISION	03/24/21

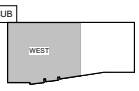
KEYNOTES:

- 1. ALL AIR HANDLING CONTROL DEVICES REFERRED SPECIFICATION AND CONTRACT DOCUMENTS.
- 2. ALL UNIONS REQUIRED TO CONDUCT BUSINESS PROVIDED WITH A COPY OF THIS PLAN.
- 3. ALL 1" X 1" EXHAUST UNITS. SEE MECHANICAL FRAME CONSTRUCTION DOCUMENTS SHEET M11021.
- 4. WHERE INDICATED PROVIDE SOUND ATTENUATION AS NOTED ON THE MECHANICAL SHEET M11021.
- 5. CONTRACTOR TO PROVIDE A RELEASE AND ACCEPTANCE OF WORK FOR ALL WORK AND MATERIALS SUBJECT TO THE CONTRACT DOCUMENTS SHEET M11021.



FLOOR PLAN LEGEND

- 1. 1-HOUR FIRE BARRIER
- 2. 2-HOUR FIRE BARRIER
- 3. 3-HOUR FIRE BARRIER
- INDICATES SMOKE PARTITION
- INDICATES CAST CONCRETE
- INDICATES CONCRETE MASONRY UNITS
- INDICATES BRICK MASONRY
- INDICATES STEEL STUD FRAMED PARTITIONS



1 SECOND FLOOR MECHANICAL PLAN - HVAC - SECTOR A
M11021 1/8" = 1'-0"



REVISION SCHEDULE

REV#	DESCRIPTION	DATE
1	ISSUED SETS	05/20/2021
2	REVISIONS	05/20/2021
3	REVISIONS	05/20/2021
4	REVISIONS	05/20/2021
5	REVISIONS	05/20/2021
6	REVISIONS	05/20/2021
7	REVISIONS	05/20/2021
8	REVISIONS	05/20/2021
9	REVISIONS	05/20/2021
10	REVISIONS	05/20/2021

WAKE COUNTY PUBLIC HEALTH BUILDING IFC PACKAGE
 WAKE COUNTY
 NORTH CAROLINA

ISSUED SETS
 IFC PACKAGE 05/20/2021

Drawn By: JEM
 Project No: 2020031

M1102A
 SECOND FLOOR MECHANICAL PLAN - HVAC - SECTOR A



REVISION SCHEDULE

REV#	DESCRIPTION	DATE
1	ADDENDUM 1	6/19/21
2	REVISION	8/27/21
3	REVISION	11/22/21
4	REVISION	12/1/21
5	REVISION	1/24/22
6	REVISION	2/20/22
7	REVISION	3/16/22
8	REVISION	3/16/22
9	REVISION	3/16/22
10	REVISION	3/16/22
11	REVISION	3/16/22
12	REVISION	3/16/22

WAKE COUNTY PUBLIC HEALTH BUILDING IFC PACKAGE
 WAKE COUNTY
 NORTH CAROLINA

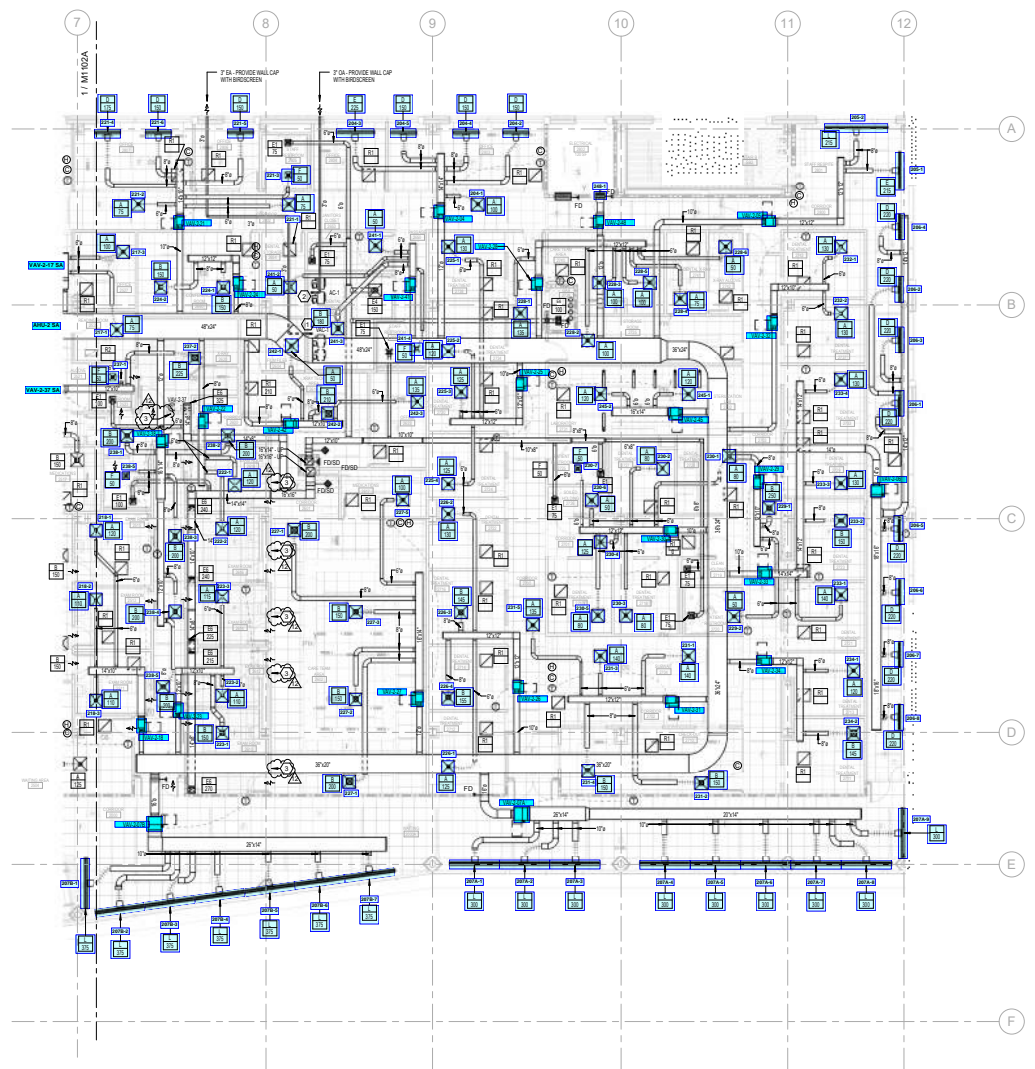
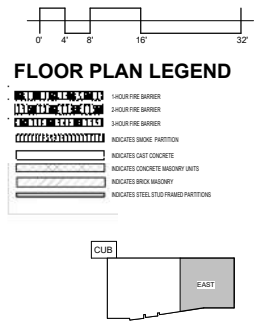
ISSUED SETS
 IFC PACKAGE 05/20/2021

Drawn By: JEM
 Project No: 2020051

M1102B
 SECOND FLOOR MECHANICAL PLAN - HVAC - SECTOR B

KEYNOTES:

- 1. ALL VAV BOXES SHALL BE INSTALLED IN ACCORDANCE WITH THE MECHANICAL CONTRACTOR TO BE DETERMINED.
- 2. ALL VAV BOXES SHALL BE INSTALLED IN ACCORDANCE WITH THE MECHANICAL CONTRACTOR TO BE DETERMINED.
- 3. ALL VAV BOXES SHALL BE INSTALLED IN ACCORDANCE WITH THE MECHANICAL CONTRACTOR TO BE DETERMINED.
- 4. ALL VAV BOXES SHALL BE INSTALLED IN ACCORDANCE WITH THE MECHANICAL CONTRACTOR TO BE DETERMINED.
- 5. ALL VAV BOXES SHALL BE INSTALLED IN ACCORDANCE WITH THE MECHANICAL CONTRACTOR TO BE DETERMINED.
- 6. ALL VAV BOXES SHALL BE INSTALLED IN ACCORDANCE WITH THE MECHANICAL CONTRACTOR TO BE DETERMINED.

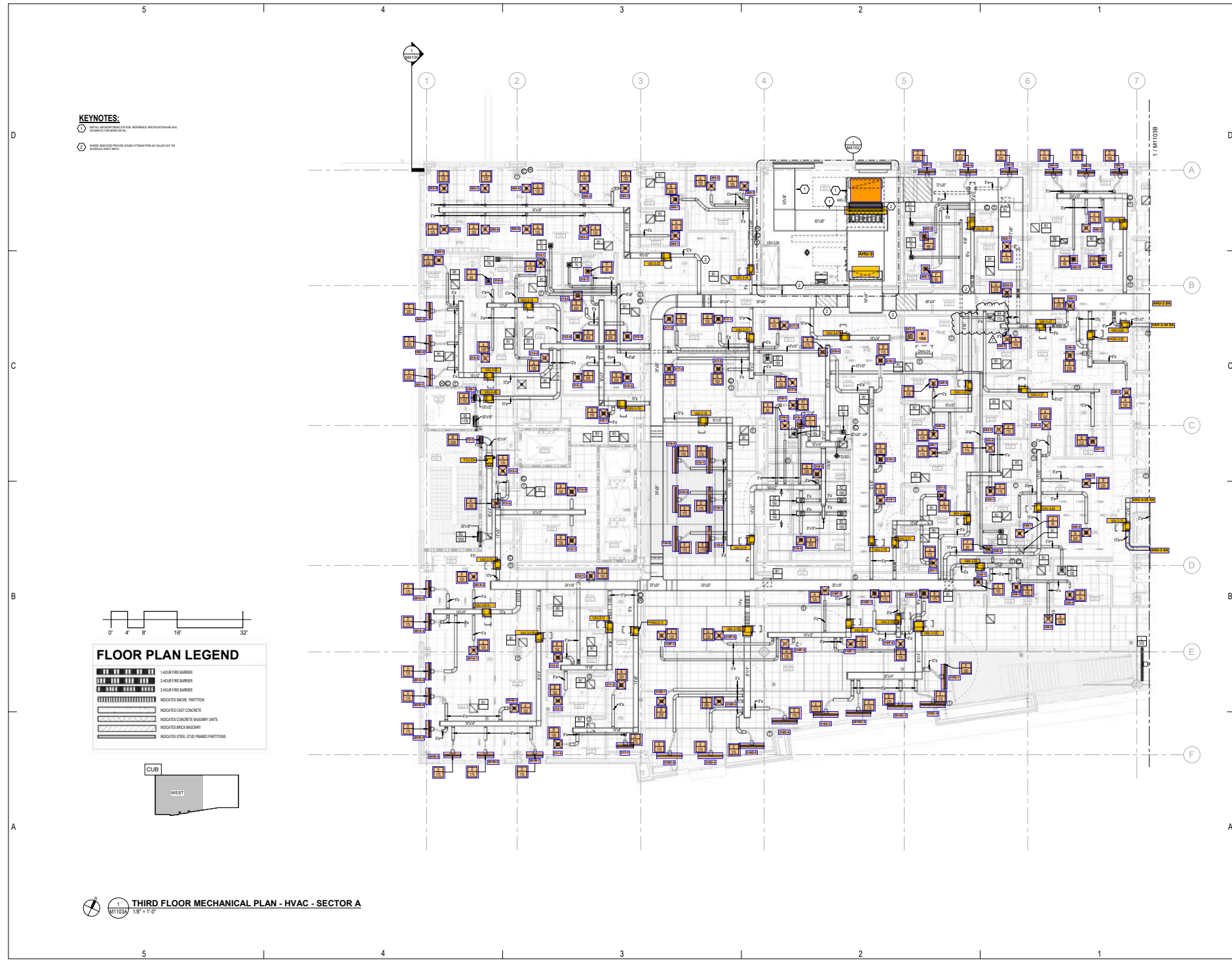


SECOND FLOOR MECHANICAL PLAN - HVAC - SECTOR B
 1/8" = 1'-0"



REVISION SCHEDULE

REV	DESCRIPTION	DATE
1	SCHEMATIC 1	01/19/21
2	BLP-F1036	02/17/21
3	BLP-F1036	03/02/21
4	BLP-F1036	02/11/21
5	BLP-F1036	02/24/21
6	BLP-F1036 REV 1	05/04/21
7	BLP-F1036	07/16/21

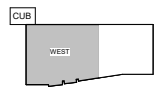


KEYNOTES:

- 1. REFER TO MECHANICAL SCHEDULE FOR EQUIPMENT PERFORMANCE AND EFFICIENCY REQUIREMENTS.
- 2. REFER TO MECHANICAL SCHEDULE FOR EQUIPMENT PERFORMANCE AND EFFICIENCY REQUIREMENTS.

FLOOR PLAN LEGEND

- 1-HOUR FIRE BARRIER
- 2-HOUR FIRE BARRIER
- 3-HOUR FIRE BARRIER
- INDICATES SMOKE PARTITION
- INDICATES CAST CONCRETE
- INDICATES CONCRETE MASONRY UNITS
- INDICATES BRICK MASONRY
- INDICATES STEEL STUD FRAMED PARTITIONS



1 THIRD FLOOR MECHANICAL PLAN - HVAC - SECTOR A
 1/8" = 1'-0"

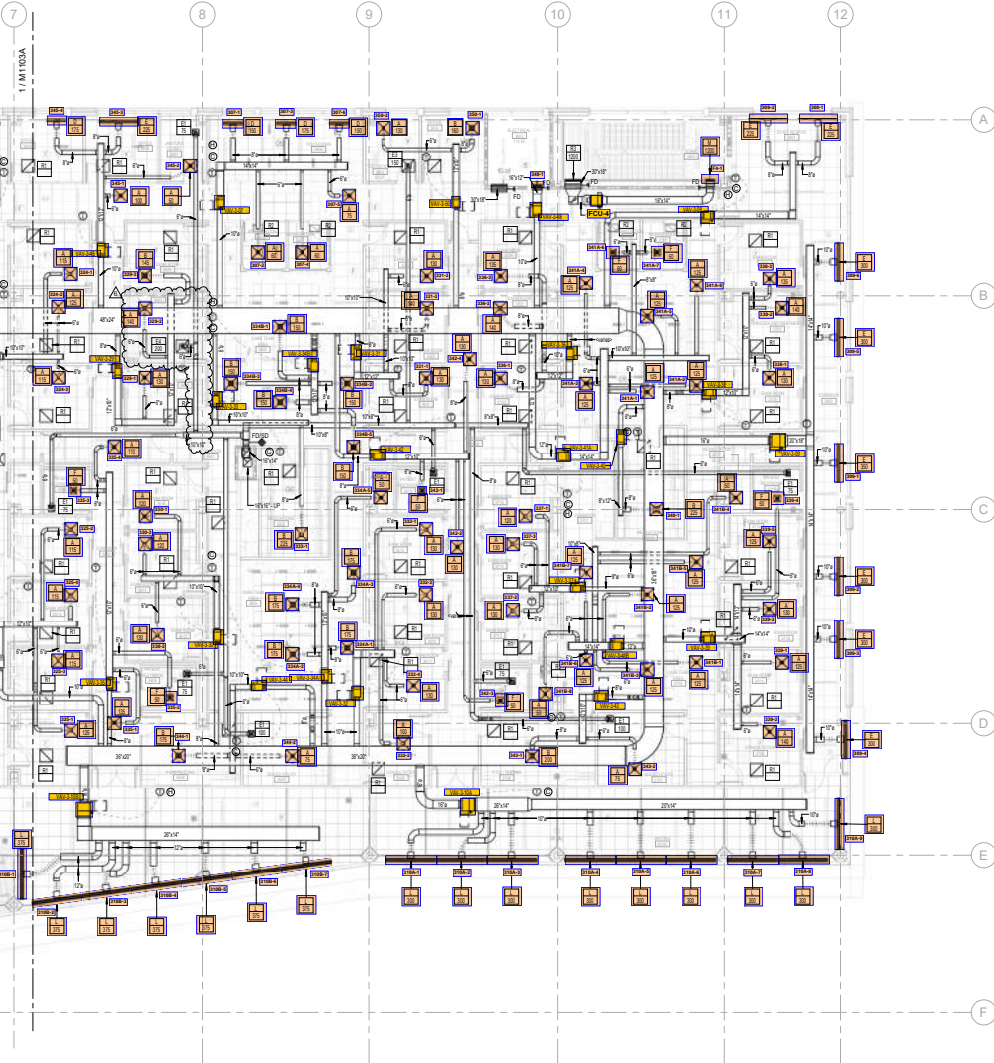
5 4 3 2 1

D





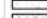



C

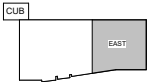
B

A



FLOOR PLAN LEGEND

-  1-HOUR FIRE BARRIER
-  2-HOUR FIRE BARRIER
-  3-HOUR FIRE BARRIER
-  INDICATES SMOKE PARTITION
-  INDICATES CAST CONCRETE
-  INDICATES CONCRETE MASONRY UNITS
-  INDICATES BRICK MASONRY
-  INDICATES STEEL STUD FRAMED PARTITIONS



 **1 THIRD FLOOR MECHANICAL PLAN - HVAC - SECTOR B**
M1103B 1/8" = 1'-0"

5 4 3 2 1



REVISION SCHEDULE

REV #	DESCRIPTION	DATE
1	SCHEMATIC	01/19/21
2	SCHEMATIC	02/19/21
3	SCHEMATIC	03/02/21
4	SCHEMATIC	02/11/21
5	SCHEMATIC	02/24/21
6	SCHEMATIC	02/16/21

WAKE COUNTY PUBLIC HEALTH BUILDING IFC PACKAGE
 WAKE COUNTY
 HEALTH CARE DIVISION

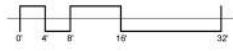
ISSUED SETS
 IFC PACKAGE 05/20/2021

Drawn By: JEM
 Project No: 2020051

M1103B
 THIRD FLOOR MECHANICAL PLAN - HVAC - SECTOR B

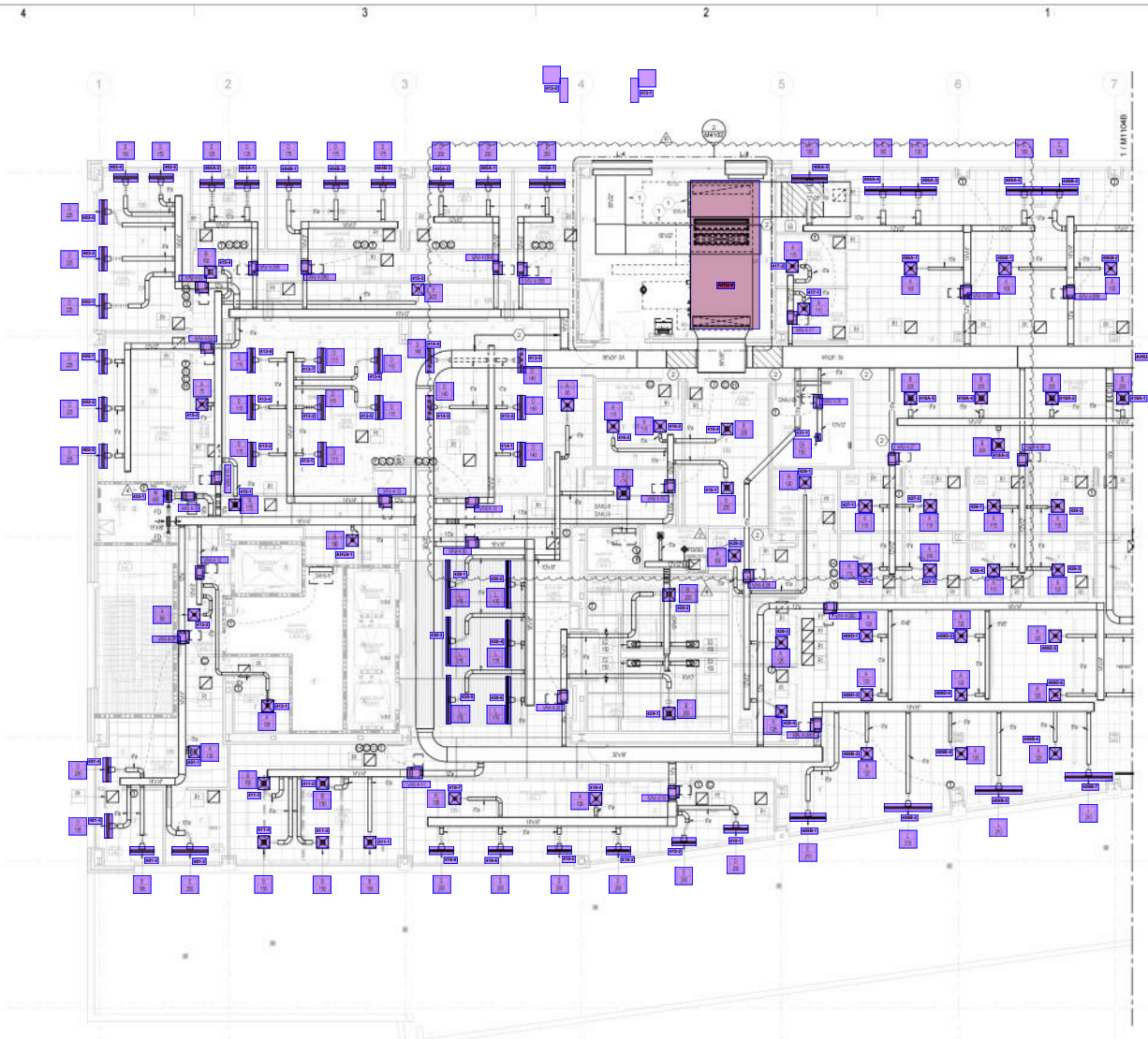
KEYNOTES:

- ① INSTALL AIR MONITORING STATION. REFERENCE SPECIFICATION AND AHU SCHEMATIC FOR MORE DETAIL.
- ② WHERE INDICATED PROVIDE SOUND ATTENUATORS AS CALLED OUT ON SCHEDULE SHEET M101.



FLOOR PLAN LEGEND

	INDICATES FIRE DAMPERS
	INDICATES AIR DAMPERS
	INDICATES SOUND DAMPERS
	INDICATES BRICK PARTITION
	INDICATES GOLF CONCRETE
	INDICATES CONCRETE MAJOR PARTS
	INDICATES BRICK MASONRY
	INDICATES STEEL STUD PARTITION



1 FOURTH FLOOR MECHANICAL PLAN - HVAC - SECTOR A
M1104A 1/8" = 1'-0"

Architect
Engineering
Interior Architecture
Planning
Interior Design
215 West 10th Street, Suite 404
Wilmington, NC 28401
www.oba.com

REVISION	DESCRIPTION	DATE
1	ADDendum 1	09/03/20
2	BLD-FLOOR	09/21/20
3	BLD-FLOOR	10/05/20
4	BLD-FLOOR	10/21/20
5	BLD-FLOOR	11/05/20
6	BLD-FLOOR REV 1	11/05/20

WAKE COUNTY PUBLIC HEALTH BUILDING PC PACKAGE
WAKE COUNTY HEALTH CARE AUTHORITY
1000 W. GARRISON STREET
Raleigh, NC 27601

ISSUED SETS
PC PACKAGE 09/20/20

Drawn By: KEM
Project No: 2020001

M1104A
FOURTH FLOOR MECHANICAL PLAN - HVAC - SECTOR A

5

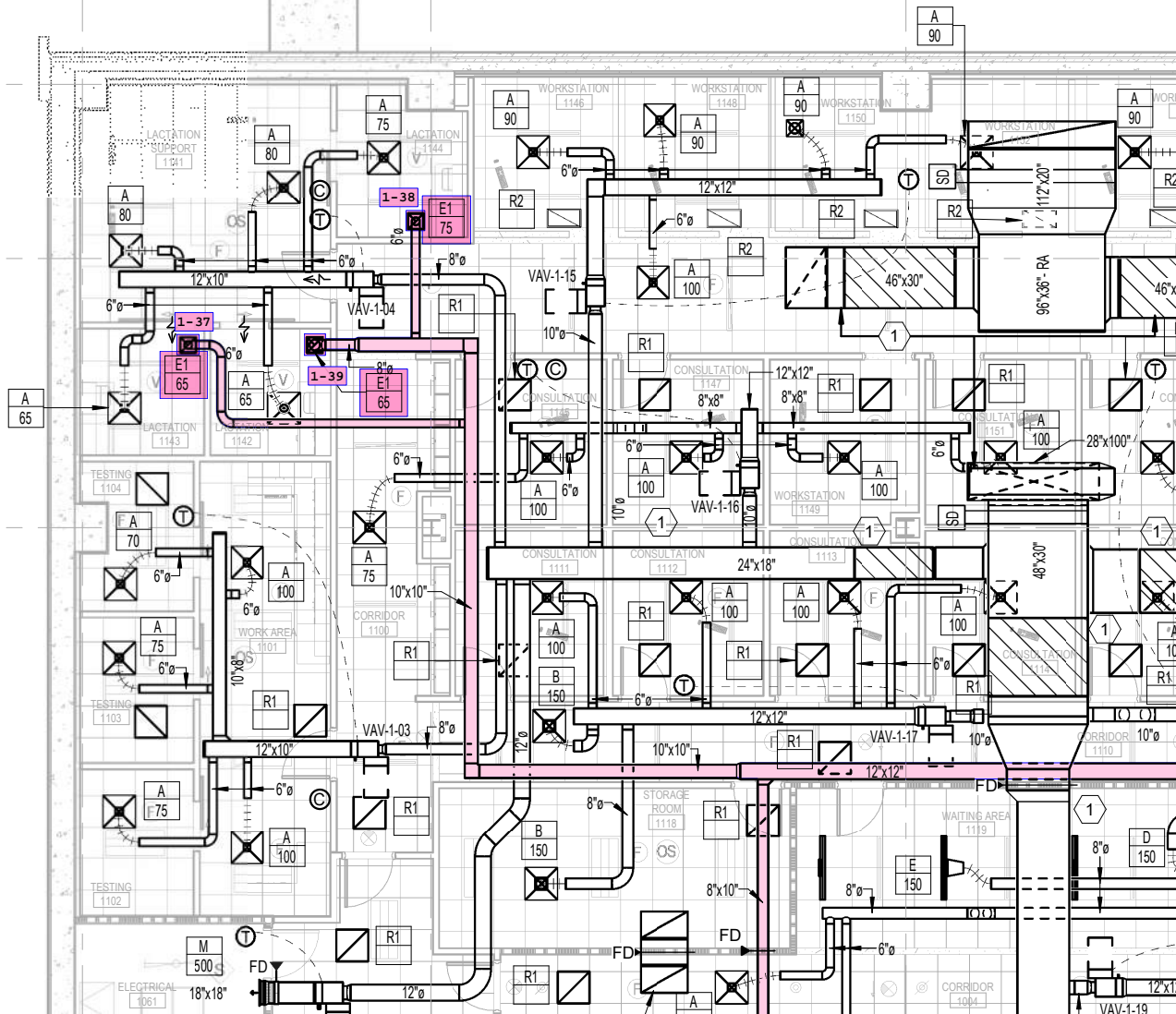
4

1

2

3

D



5

4

D

7

8

1 / M1101A



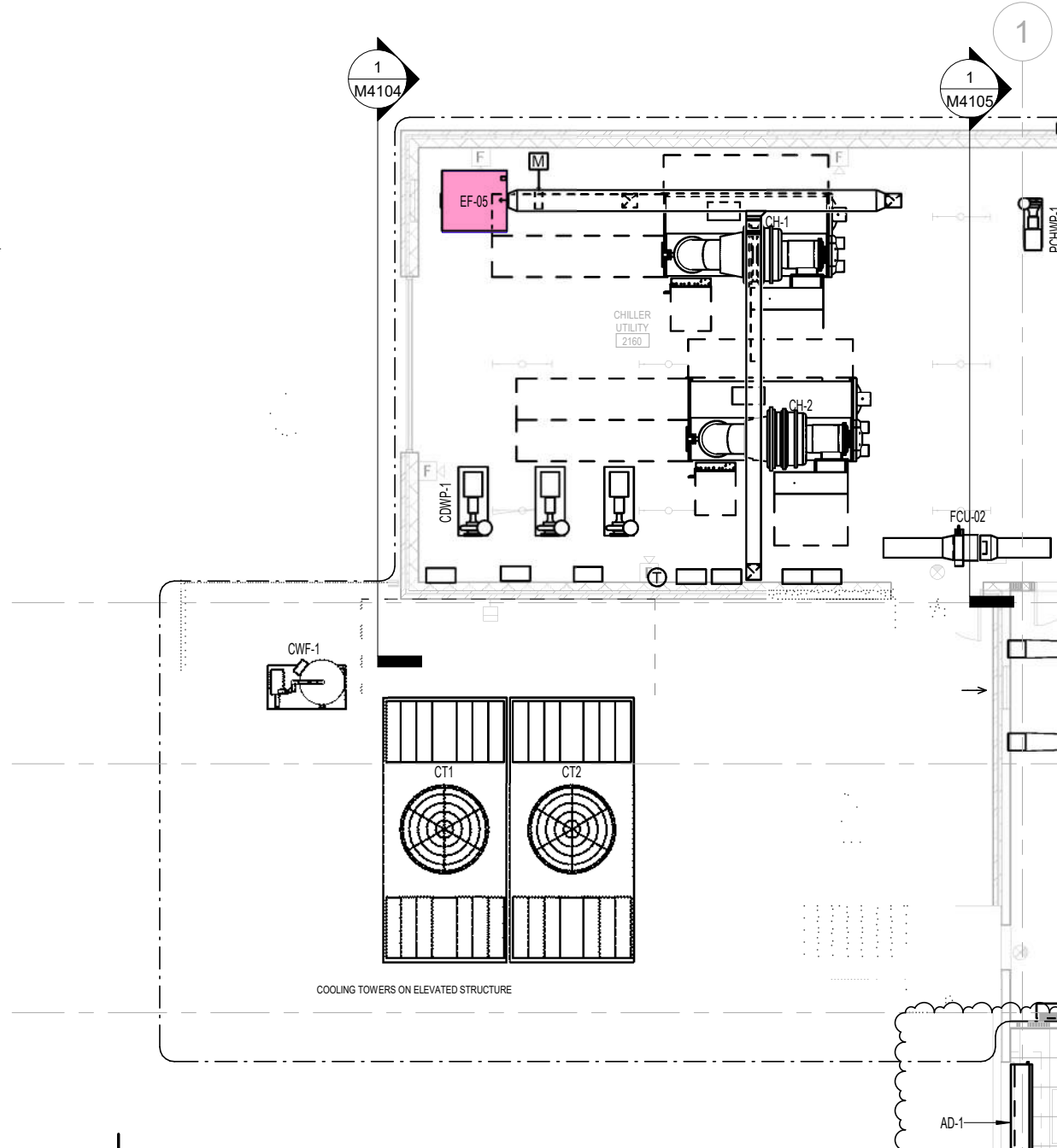
5

4

KEYNOTES:

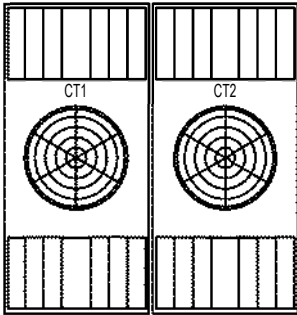
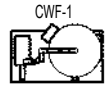
- 1 INSTALL AIR MONITORING STATION. REFERENCE SPECIFICATION AND AHU SCHEMATIC FOR MORE DETAIL.
- 2 ALL LOUVERS EXPOSED TO CHEMICALS SHOULD BE PROVIDED WITH Z-COAT 70% PVDF.
- 3 3'-0" X 1'-0" EXHAUST LOUVER. SEE ARCHITECTURAL PLANS FOR EXACT LOCATION.
- 4 WHERE INDICATED PROVIDE SOUND ATTENUATORS AS CALLED OUT ON SCHEDULE SHEET M6101.
- 5 CONTRACTOR TO PROVIDE 5' KEWALNEE HIGH PERFORMANCE LABORATORY FUME HOOD, AND FRONT CABINET BLOWER ON/ OFF SWITCH.

D



1
M4104

1
M4105



COOLING TOWERS ON ELEVATED STRUCTURE

AD-1

KEYNOTES:

1

3" EA DUCT TO EXTERIOR WALL. MECHANICAL CONTRACTOR TO MAKE FINAL CONNECTION.

2

3" OA DUCT FROM EXTERIOR WALL. MECHANICAL CONTRACTOR TO MAKE FINAL CONNECTION.

3

PROVIDE BOTH OF THE FOLLOWING ROOM PRESSURE MONITORS BESIDE DOOR (6 LOCATIONS) AT A VISIBLE LOCATION/HEIGHT TO BE CONFIRMED BY OWNER, AND INSTALL PER ALL MANUFACTURER'S INSTRUCTIONS.

- 1. ADI "BALL-IN-THE-WALL"
- 2. DIGITAL ROOM PRESSURE MONITOR/CONTROLLER, SETRA FLEX-RC. LOW-VOLTAGE CONTROL WIRING AND BACNET CONNECTION TO BE PROVIDED BY CONTROLS CONTRACTOR.

12

D

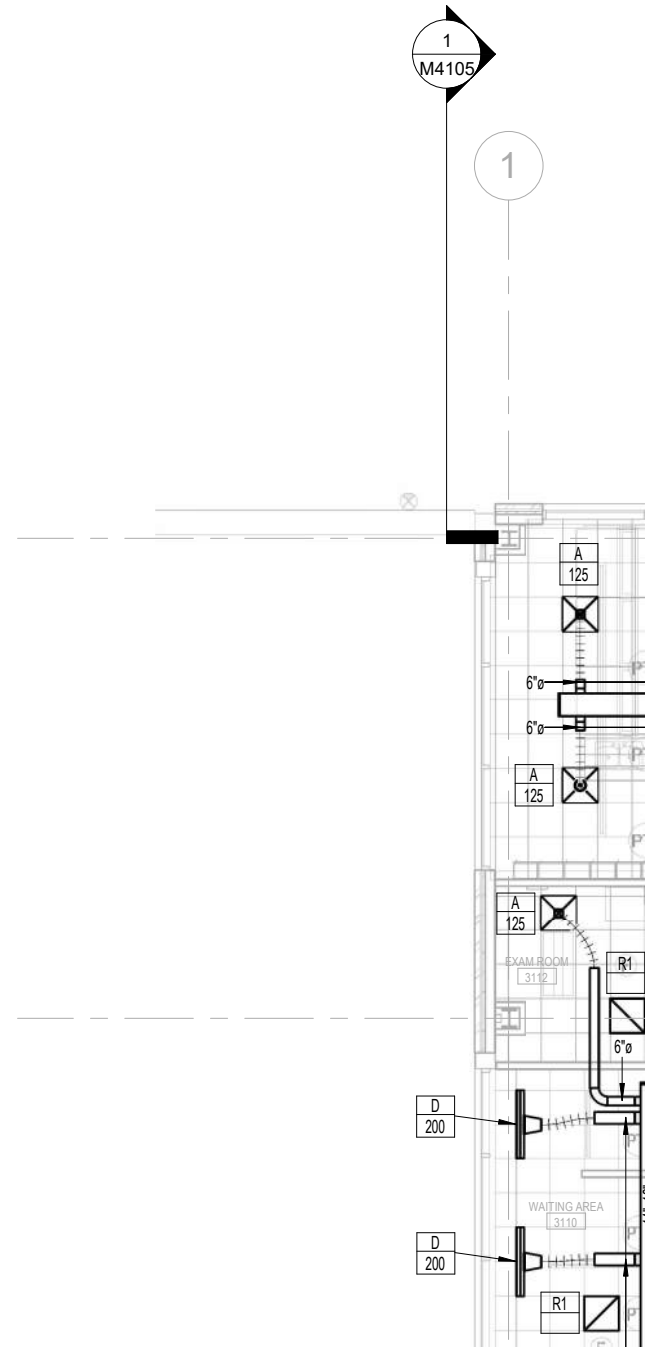
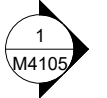
5

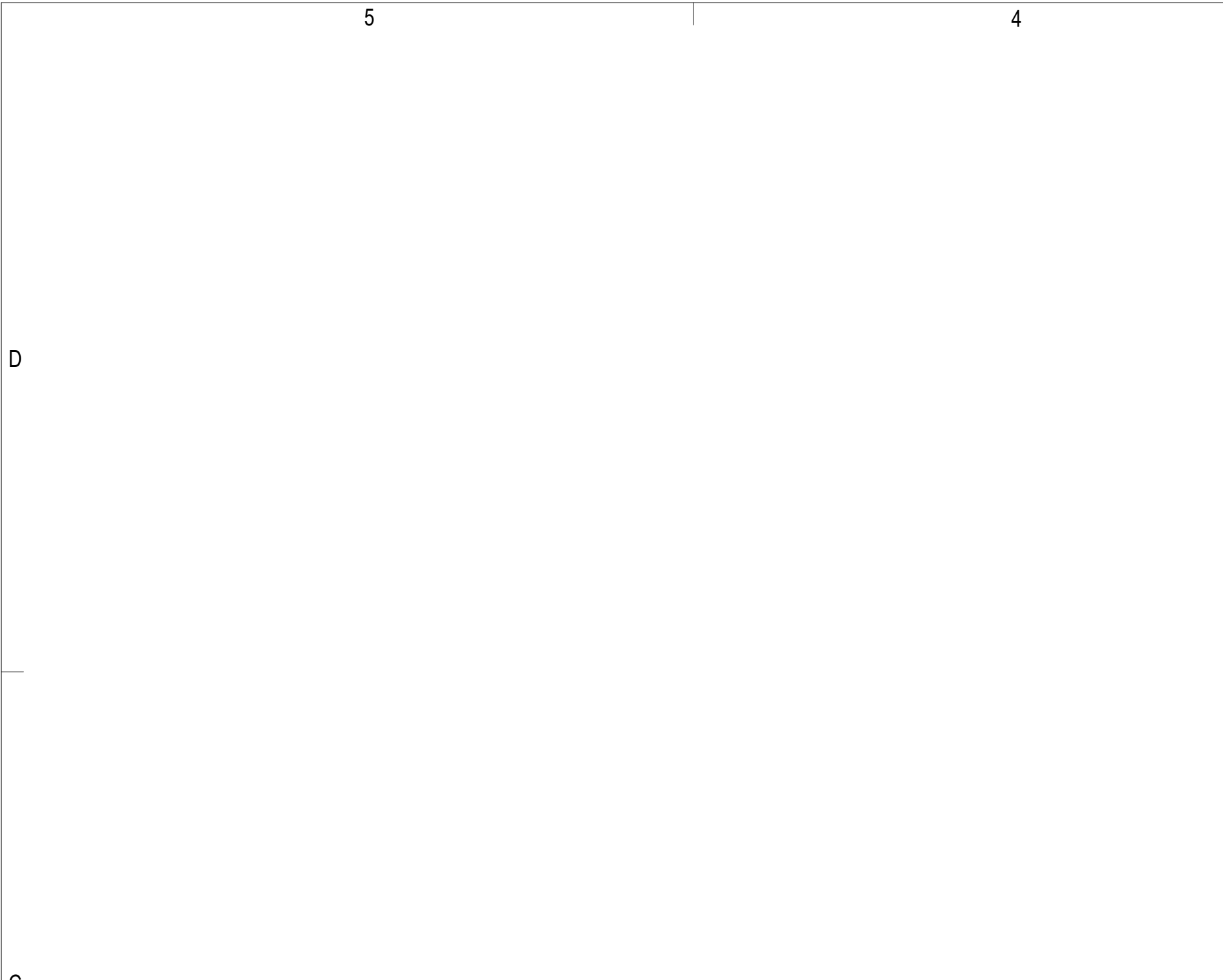
4

D

KEYNOTES:

- 1 INSTALL AIR MONITORING STATION. REFERENCE SPECIFICATION AND AHU SCHEMATIC FOR MORE DETAIL.
- 2 WHERE INDICATED PROVIDE SOUND ATTENUATORS AS CALLED OUT ON SCHEDULE SHEET M6101.





2

5

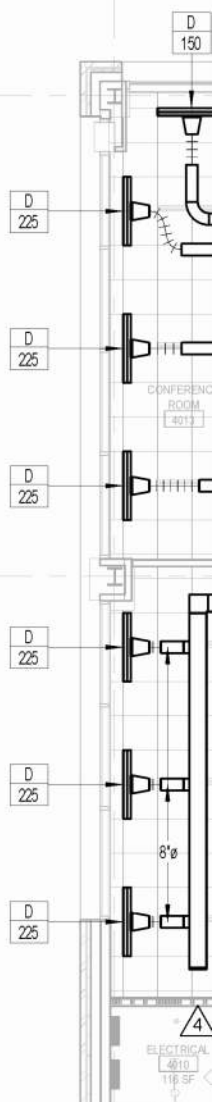
4

KEYNOTES:

- ① INSTALL AIR MONITORING STATION. REFERENCE SPECIFICATION AND AHU SCHEMATIC FOR MORE DETAIL.
- ② WHERE INDICATED PROVIDE SOUND ATTENUATORS AS CALLED OUT ON SCHEDULE SHEET M6101.

D

1



5

4

D

0